

I068 Other rheumatic aortic valve diseases
I069 Rheumatic aortic valve disease, unspecified
I070 Rheumatic tricuspid stenosis
I071 Rheumatic tricuspid insufficiency
I072 Rheumatic tricuspid stenosis and insufficiency
I078 Other rheumatic tricuspid valve diseases
I079 Rheumatic tricuspid valve disease, unspecified



CMS
CENTERS FOR MEDICARE & MEDICAID SERVICES

ICD-10

Official CMS Industry Resources for the ICD-10 Transition
www.cms.gov/ICD10



Transitioning to ICD-10

Presented by:
The Centers for Medicare & Medicaid Services

June 20, 2013



I068 Other rheumatic aortic valve diseases
I069 Rheumatic aortic valve disease, unspecified
I070 Rheumatic tricuspid stenosis
I071 Rheumatic tricuspid insufficiency
I072 Rheumatic tricuspid stenosis and insufficiency
I078 Other rheumatic tricuspid valve diseases
I079 Rheumatic tricuspid valve disease, unspecified



ICD-10

Official CMS Industry Resources for the ICD-10 Transition
www.cms.gov/ICD10



ICD-10 Basics

ICD-10 Implementation



ICD-10 Compliance Date

- The compliance deadline for ICD-10-CM and PCS is **October 1, 2014**

**ICD-10 DEADLINE
Oct 1, 2014**

078 Other rheumatic tricuspid valve diseases
079 Rheumatic tricuspid valve disease, unspecified
080 Rheumatic disorders of both mitral and aortic valves
081 Rheumatic disorders of both mitral and tricuspid valves
082 Rheumatic disorders of both aortic and tricuspid valves
083 Combined rheumatic disorders of mitral, aortic and tricuspid valves



What is ICD-10?

In 1990, the World Health Organization (WHO) approved the 10th Revision of the International Classification of Diseases (ICD), which is known as ICD-10.

What

- A method of coding:
 - The patient's state of health and
 - Institutional procedures
- In the U.S., ICD-10 includes:
 - ICD-10-CM : clinical modification of WHO standard for diagnoses that is maintained by NCHS and is for specific use in the U.S.
 - ICD-10-PCS: inpatient procedures developed and maintained by CMS

Why

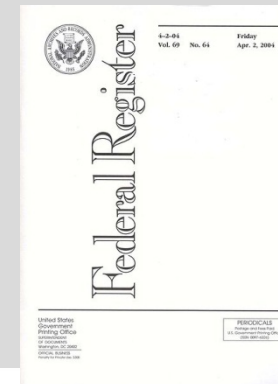
- ICD-10-CM and PCS are complete revisions of their U.S. developed ICD-9 counterparts, which were adopted in 1979
 - More information per code
 - Better support for care management, quality measurement, & analytics
 - Improved ability to understand risk and severity

Who

- All HIPAA-covered entities must use ICD-10 for information they transmit electronically

When

- **Compliance Date: 10/1/14**
 - Outpatient services are based on the Date of Service
 - Inpatient services are based on the Date of Discharge



078 Other rheumatic tricuspid valve diseases
079 Rheumatic tricuspid valve disease, unspecified
080 Rheumatic disorders of both mitral and aortic valves
081 Rheumatic disorders of both mitral and tricuspid valves
082 Rheumatic disorders of both aortic and tricuspid valves
083 Combined rheumatic disorders of mitral, aortic and tricuspid valves



Why ICD-10 Matters

- ICD-10 Advances Health Care and Implementation of eHealth Initiatives
- ICD-10 Captures Advances in Medicine and Medical Technology
- ICD-10 Improves Data for Quality Reporting
- ICD-10 Improves Public Health Research, Reporting and Surveillance

078 Other rheumatic tricuspid valve diseases
079 Rheumatic tricuspid valve disease, unspecified
080 Rheumatic disorders of both mitral and aortic valves
081 Rheumatic disorders of both mitral and tricuspid valves
082 Rheumatic disorders of both aortic and tricuspid valves
083 Combined rheumatic disorders of mitral, aortic and tricuspid valves



ICD-10 Compliance

Opportunities for Compliance



- Improve accuracy of payment policies and implementation of payment policies
- Improve coding practices & claims payment accuracy and efficiency
- Enhanced fraud, waste, abuse prevention and detection
- Foundational for health care reform
- Better quality measurement through improved identification of patient populations
- More accurate understanding of population health
- Enhanced research and analytics

Risks of Non-Compliance



- Incorrect or slow claims payment
- Increased risk of improper payments
- Increased error rates
- Penalties for non-compliance
- Increased appeals and customer service volume
- Incorrect or slow Medicare as a Secondary Payer and Coordination of Payments processes
- Disruptions in research, analytics, and longitudinal reporting
- Disruptions to surveillance and public health reporting

078 Other rheumatic tricuspid valve diseases
079 Rheumatic tricuspid valve disease, unspecified
080 Rheumatic disorders of both mitral and aortic valves
081 Rheumatic disorders of both mitral and tricuspid valves
082 Rheumatic disorders of both aortic and tricuspid valves
083 Combined rheumatic disorders of mitral, aortic and tricuspid valves



I068 Other rheumatic aortic valve diseases
I069 Rheumatic aortic valve disease, unspecified
I070 Rheumatic tricuspid stenosis
I071 Rheumatic tricuspid insufficiency
I072 Rheumatic tricuspid stenosis and insufficiency
I078 Other rheumatic tricuspid valve diseases
I079 Rheumatic tricuspid valve disease, unspecified



ICD-10

Official CMS Industry Resources for the ICD-10 Transition
www.cms.gov/ICD10



CMS

ICD-10 Implementation



CMS ICD-10 Implementation Today

Medicare Implementation

- The Medicare implementation is on track.
- Internal testing started.

State Medicaid Agencies

- CMS conducted a State assessment in January 2013 and in early May 2013. May results currently are being compiled.
- Assessment response rate was 94% in January 2013.

Providers

- Health plans, clearinghouses, large physician practices and hospitals are on target for ICD-10 implementation.
- CMS is providing small physician practices with additional technical assistance.

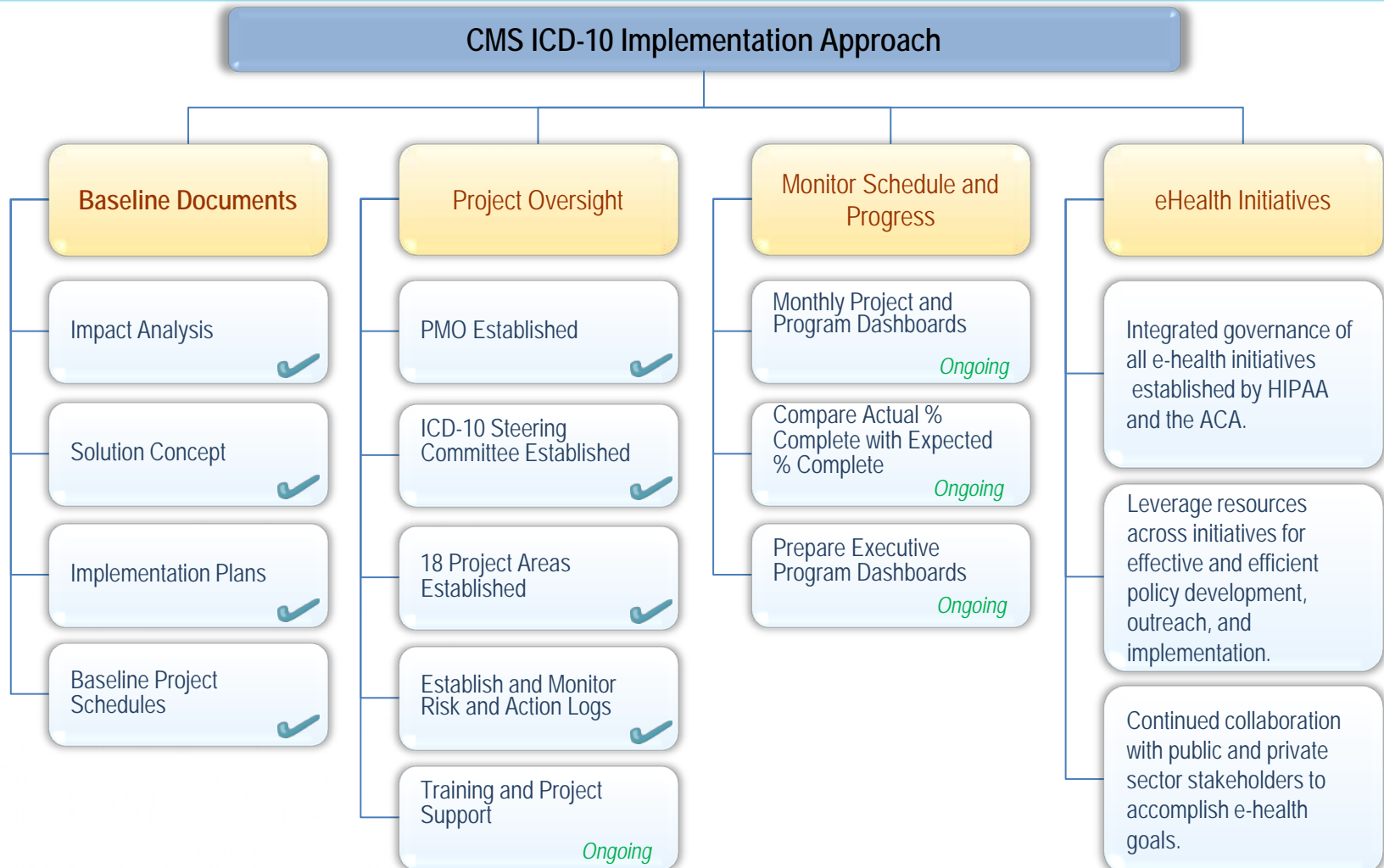
Vendors

- Vendors are having discussions with their customers to ramp up ICD-10 efforts.

078 Other rheumatic tricuspid valve diseases
079 Rheumatic tricuspid valve disease, unspecified
080 Rheumatic disorders of both mitral and aortic valves
081 Rheumatic disorders of both mitral and tricuspid valves
082 Rheumatic disorders of both aortic and tricuspid valves
083 Combined rheumatic disorders of mitral, aortic and tricuspid valves



CMS ICD-10 PMO Approach

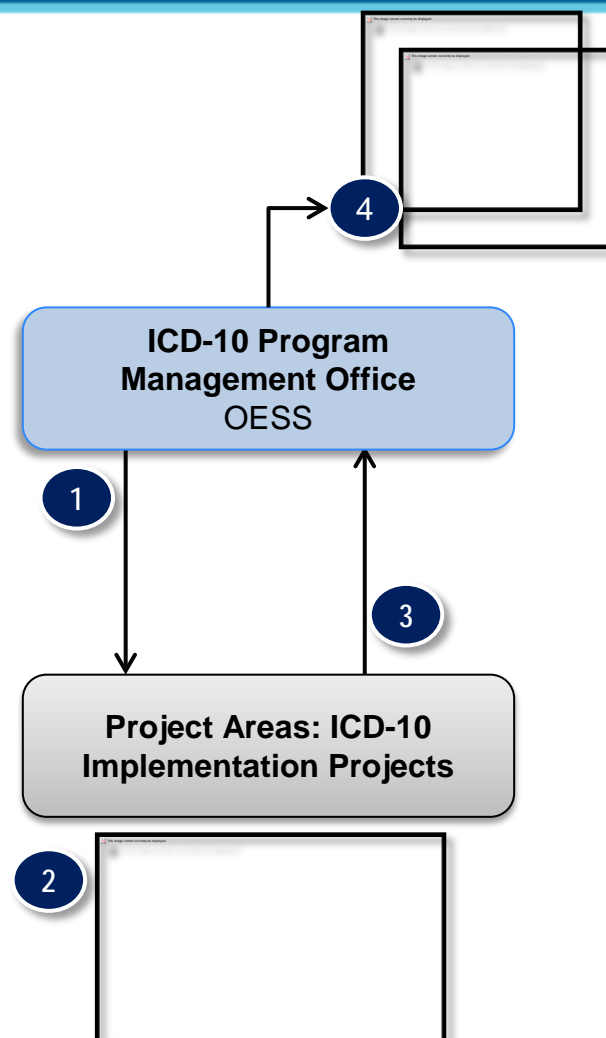


078 Other rheumatic tricuspid valve diseases
 079 Rheumatic tricuspid valve disease, unspecified
 080 Rheumatic disorders of both mitral and aortic valves
 081 Rheumatic disorders of both mitral and tricuspid valves
 082 Rheumatic disorders of both aortic and tricuspid valves
 083 Combined rheumatic disorders of mitral, aortic and tricuspid valves



CMS ICD-10 Reporting Structure

- Project Areas report schedule updates, risk, issues to the PMO.
 1. The PMO distributes a Project Input Dashboard every two weeks.
 2. The Project Area Lead uses the *Project Input Dashboard* to update the schedule and communicate risks and submits to the PMO.
 3. The Project Area Lead submits the *Project Input Dashboard* to the PMO.
 4. The PMO aggregates the input and:
 - Updates the master schedule
 - Creates *Program Dashboards* and reporting for the Steering Committee



I068 Other rheumatic aortic valve diseases
I069 Rheumatic aortic valve disease, unspecified
I070 Rheumatic tricuspid stenosis
I071 Rheumatic tricuspid insufficiency
I072 Rheumatic tricuspid stenosis and insufficiency
I078 Other rheumatic tricuspid valve diseases
I079 Rheumatic tricuspid valve disease, unspecified



ICD-10

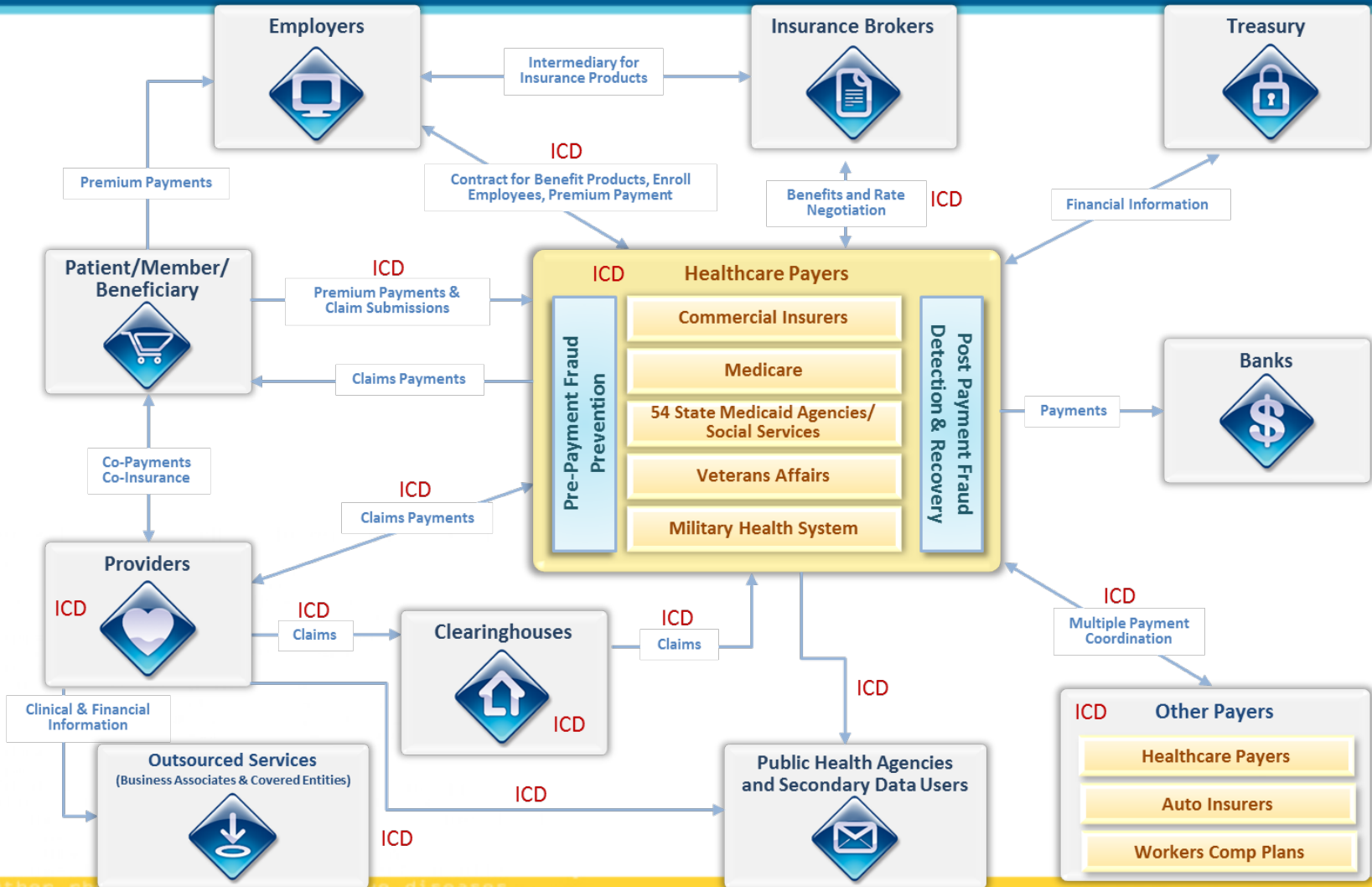
Official CMS Industry Resources for the ICD-10 Transition
www.cms.gov/ICD10



Providers ICD-10 Implementation



ICD-10 Impact Across the Industry



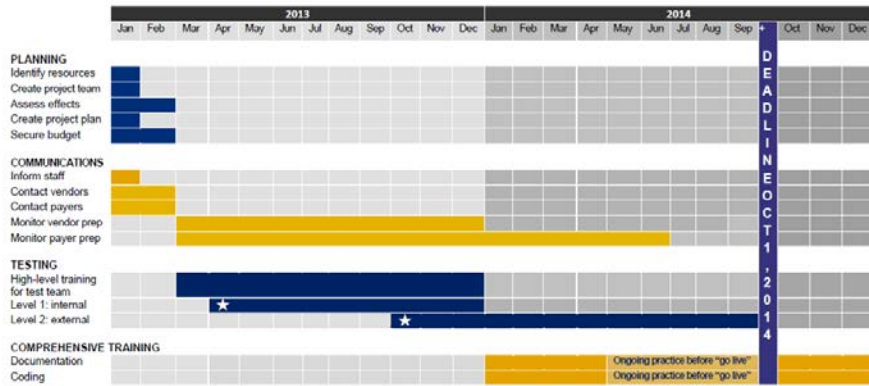
078 Other rheumatic disorders of the diseases
 079 Rheumatic tricuspid valve disease, unspecified
 080 Rheumatic disorders of both mitral and aortic valves
 081 Rheumatic disorders of both mitral and tricuspid valves
 082 Rheumatic disorders of both aortic and tricuspid valves
 083 Combined rheumatic disorders of mitral, aortic and tricuspid valves



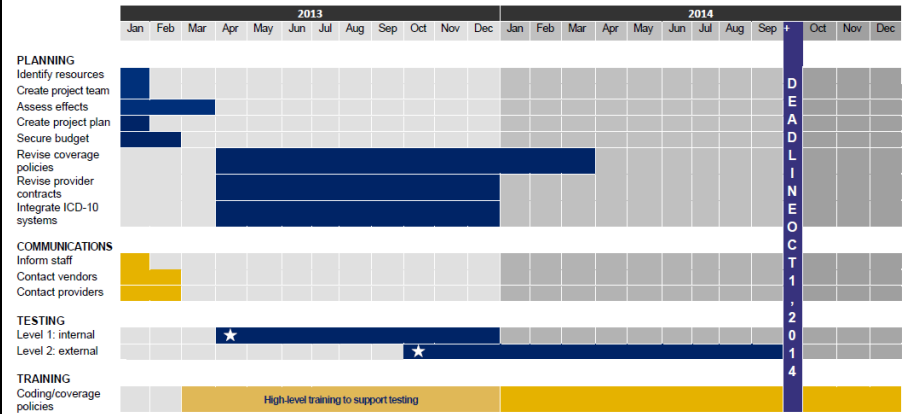
ICD-10 Timeline for Providers and Payers



ICD-10 Timeline for Small-Medium Practices at a Glance



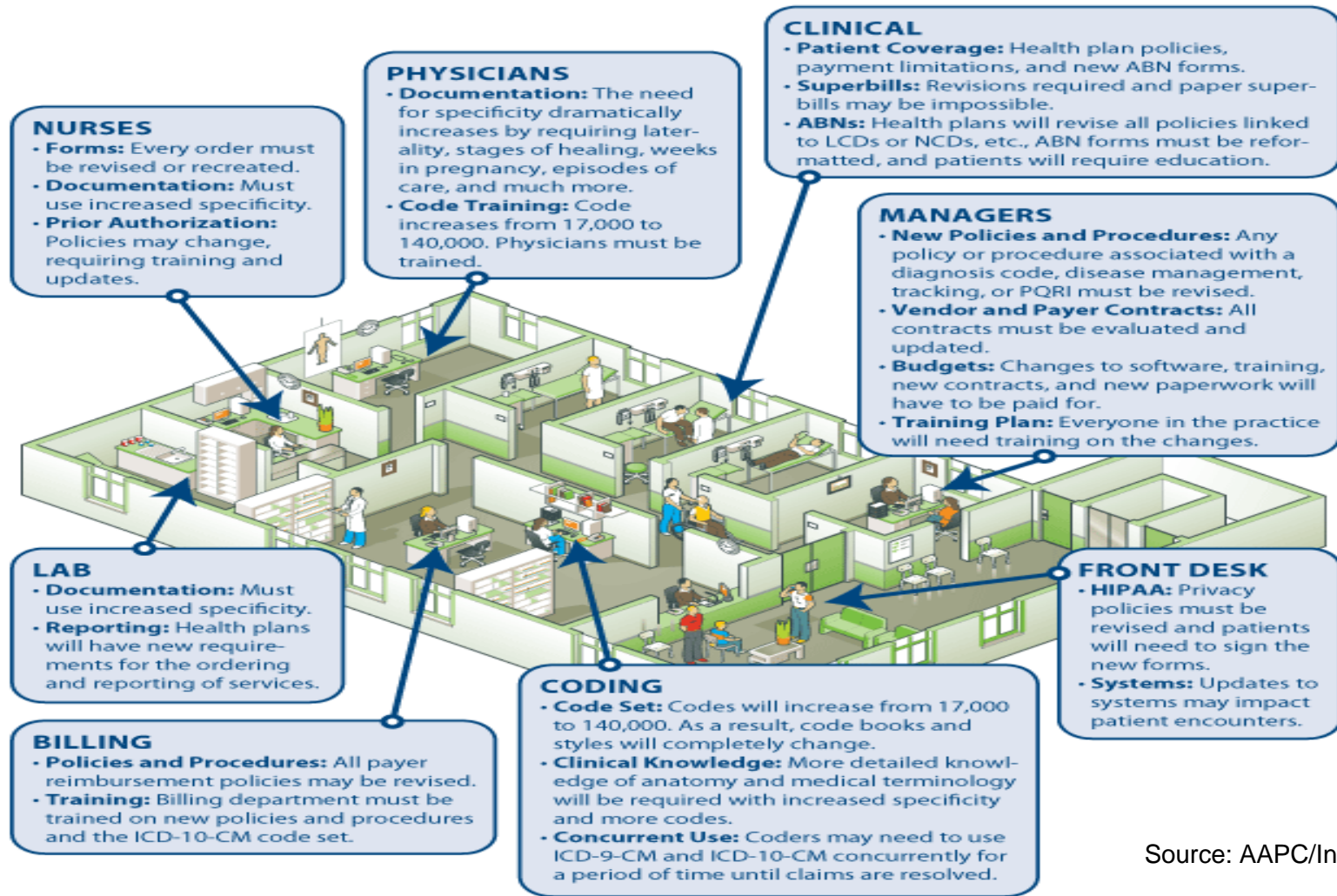
ICD-10 Timeline for Payers at a Glance



078 Other rheumatic tricuspid valve diseases
 079 Rheumatic tricuspid valve disease, unspecified
 080 Rheumatic disorders of both mitral and aortic valves
 081 Rheumatic disorders of both mitral and tricuspid valves
 082 Rheumatic disorders of both aortic and tricuspid valves
 083 Combined rheumatic disorders of mitral, aortic and tricuspid valves



ICD-10 and Physician Practices

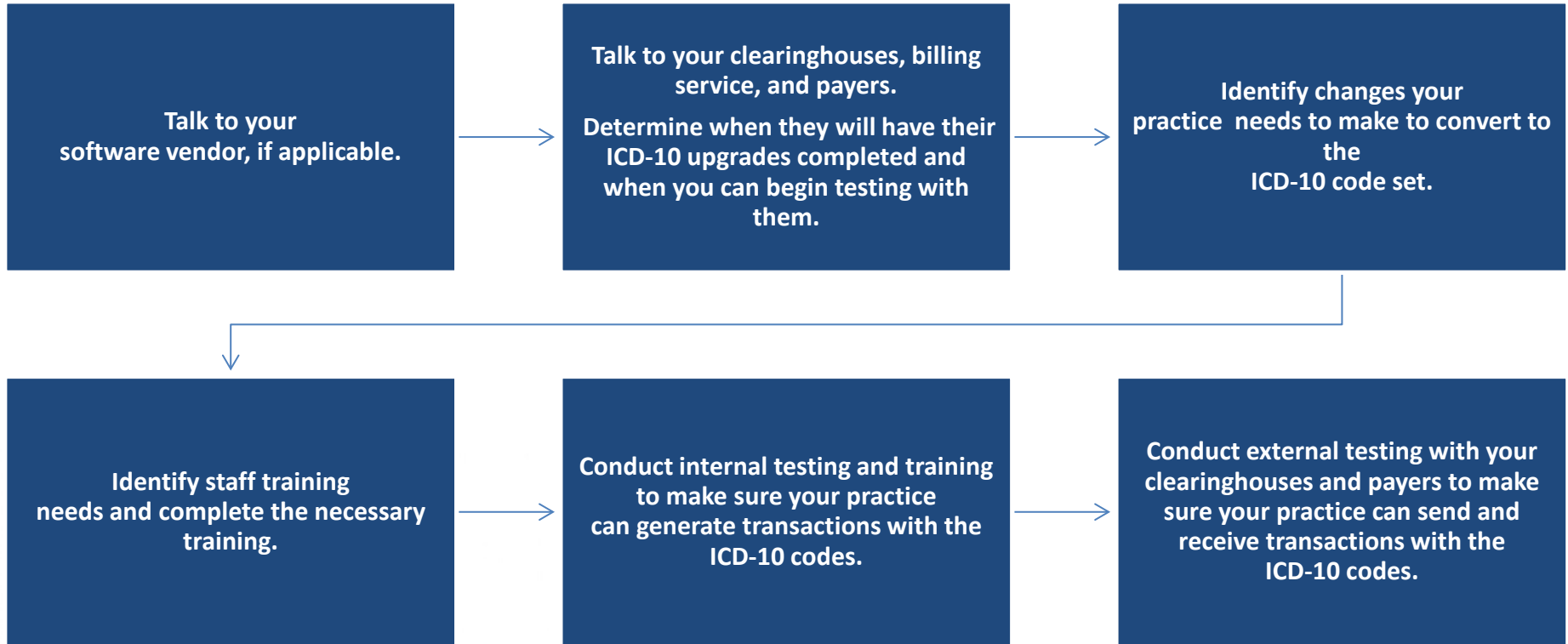


Source: AAPC/Ingenix

078 Other rheumatic tricuspid valve diseases
 079 Rheumatic tricuspid valve disease, unspecified
 080 Rheumatic disorders of both mitral and aortic valves
 081 Rheumatic disorders of both mitral and tricuspid valves
 082 Rheumatic disorders of both aortic and tricuspid valves
 083 Combined rheumatic disorders of mitral, aortic and tricuspid valves



What Should You Do to Prepare?



Helpful Links:

<http://www.himss.org/library/icd-10/playbook?navItemNumber=13480>

https://implementicd10.noblis.org/wp-uploads/2013/03/VendorChecklist_smallmed.pdf

078 Other rheumatic tricuspid valve diseases
079 Rheumatic tricuspid valve disease, unspecified
080 Rheumatic disorders of both mitral and aortic valves
081 Rheumatic disorders of both mitral and tricuspid valves
082 Rheumatic disorders of both aortic and tricuspid valves
083 Combined rheumatic disorders of mitral, aortic and tricuspid valves



I068 Other rheumatic aortic valve diseases
I069 Rheumatic aortic valve disease, unspecified
I070 Rheumatic tricuspid stenosis
I071 Rheumatic tricuspid insufficiency
I072 Rheumatic tricuspid stenosis and insufficiency
I078 Other rheumatic tricuspid valve diseases
I079 Rheumatic tricuspid valve disease, unspecified



ICD-10

Official CMS Industry Resources for the ICD-10 Transition
www.cms.gov/ICD10



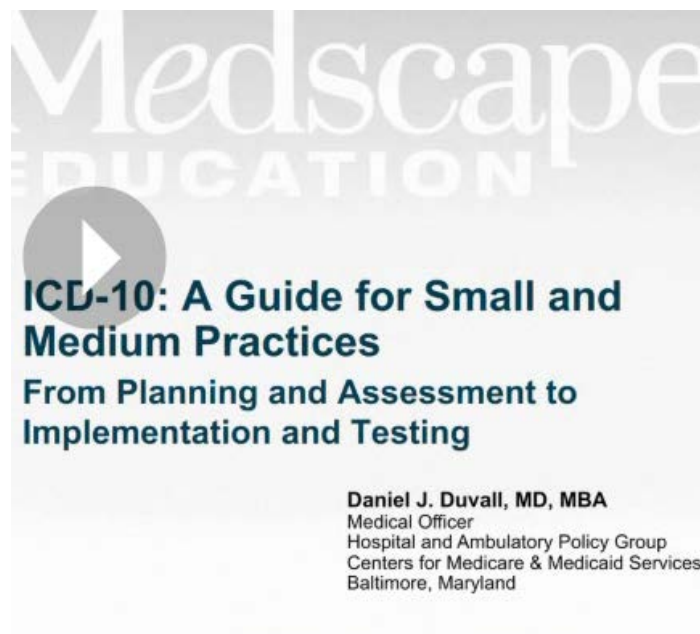
Resources

ICD-10 Implementation



Medscape Modules on ICD-10

- Two video lectures
 - ICD-10: A Guide for Small and Medium Practices
 - ICD-10: A Guide for Large Practices
- Expert article
 - *Transition to ICD-10: Getting Started*



076 Other rheumatic tricuspid valve diseases
077 Rheumatic tricuspid valve disease, unspecified
080 Rheumatic disorders of both mitral and aortic valves
081 Rheumatic disorders of both mitral and tricuspid valves
082 Rheumatic disorders of both aortic and tricuspid valves
083 Combined rheumatic disorders of mitral, aortic and tricuspid valves



CMS ICD-10 Website

Home | About CMS | Newsroom Center | FAQs | Archive | Share ? Help Email Print

Learn about [your healthcare options](#) Search

Medicare Medicaid/CHIP Medicare-Medicaid Coordination Insurance Oversight Innovation Center Regulations and Guidance Research, Statistics, Data and Systems Outreach and Education

Home > Medicare > ICD-10 > ICD-10

ICD-10

[Latest News](#)

[CMS ICD-10 Industry Email Updates](#)

[ICD-10 Implementation Timelines](#)

[CMS Implementation Planning](#)

[Provider Resources](#)

[Medicare Fee-for-Service Provider Resources](#)

[Medicaid Resources](#)

[Payer Resources](#)

[Vendor Resources](#)

[Statute and Regulations](#)

[2013 ICD-10-CM and GEMS](#)

[2013 ICD-10 PCS and GEMS](#)

[2012 ICD-10-CM and GEMS](#)

[2012 ICD-10 PCS and GEMS](#)

[ICD-9-CM Coordination and Maintenance Committee Meetings](#)

[ICD-10 MS DRG Conversion Project](#)

ICD-10

Welcome to the Centers for Medicare & Medicaid Services (CMS) ICD-10 Website.

Here you will find resources to help, [Providers](#), [Payers](#), and [Vendors](#) with the U.S. health care industry's transition to ICD-10 on October 1, 2014.

As of January 1, 2012, all electronic transactions must use [Version 5010](#) standards, which accommodate ICD-10 codes.

New ICD-10 Deadline– October 1, 2014

HHS has [announced](#) the [final rule](#) that delays the ICD-10 compliance date from October 1, 2013 to October 1, 2014.

Keep Up to Date

- Sign up for [CMS ICD-10 Industry Email Updates](#)
- Follow [@CMSGov](#) on [Twitter](#)
- Subscribe to [Latest News Page Watch](#)

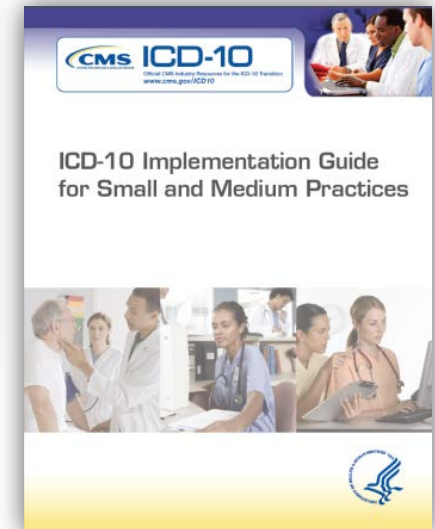
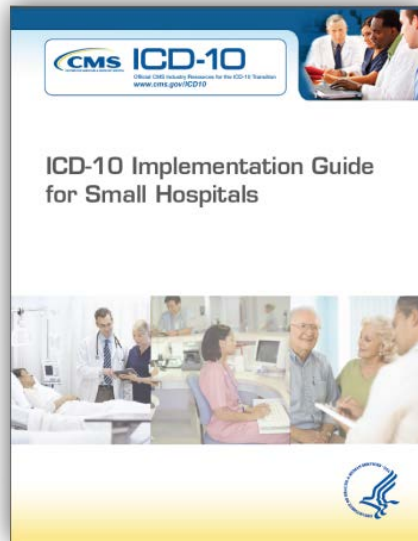
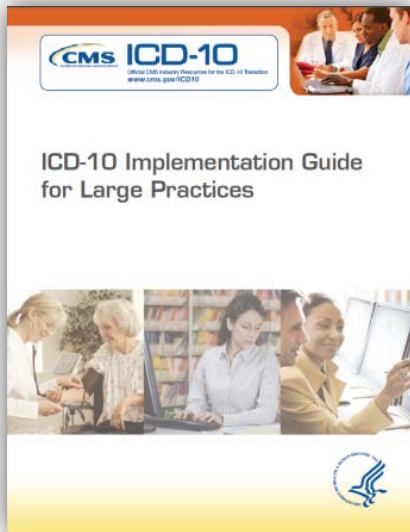
- Latest News
- Email Updates
- Provider Resources
- Payer Resources
- Vendor Resources
- GEMS
- ICD-9 Coordination and Maintenance Committee

www.cms.gov/icd10



078 Other rheumatic tricuspid valve disease, unspecified
079 Rheumatic tricuspid valve disease, unspecified
080 Rheumatic disorders of both aortic and tricuspid valves
081 Rheumatic disorders of both aortic and mitral valves
082 Rheumatic disorders of both aortic and mitral valves
083 Combined rheumatic disorders of mitral, aortic and tricuspid valves

Implementation Guides



078 Other rheumatic tricuspid valve diseases
079 Rheumatic tricuspid valve disease, unspecified
080 Rheumatic disorders of both mitral and aortic valves
081 Rheumatic disorders of both mitral and tricuspid valves
082 Rheumatic disorders of both aortic and tricuspid valves
083 Combined rheumatic disorders of mitral, aortic and tricuspid valves



Online ICD-10 Implementation Guide (in development)



Online ICD-10 Implementation Guide

Please select a guide to search:

WELCOME | ICD-10 OVERVIEW | PAYER | SMALL OR MEDIUM PHYSICIAN PRACTICE | LARGE PHYSICIAN PRACTICE | SMALL HOSPITAL

WHICH ROLE AM I?



SMALL & MEDIUM PHYSICIAN PRACTICE

Small Physician Practices have one to five physicians and may provide single specialty or multispecialty services.

Medium Physician Practices are standalone clinics not affiliated with a larger health care organization and may consist of multiple physician medical practices. The practice may have six to twenty physicians organized to provide single specialty or multispecialty patient care services and may provide both clinical and ancillary services (diagnostic, therapeutic, and custodial services).



PAYER

The term Payer applies to entities other than the patient that finance or reimburse the cost of health services. In most cases, this term refers to insurance carriers, third-party administrators, and other third-party payers—for example, health plan sponsors (employers or unions) that also self-administer their plans.



SMALL HOSPITAL

Small Hospitals are health care institutions with fewer than 100 hospital beds providing patient treatment by specialized staff and equipment and often, but not always, providing for longer-term patient stays. For the purposes of this document hospital claims refer to both outpatient and/or inpatient medical care submitted on an institutional claim (837i). Professional claims (837p) may be submitted through hospital owned physician practices.



LARGE PHYSICIAN PRACTICE

Large Physician Practices may have more than 25 physicians and may have an independent administrative infrastructure to support billing and patient eligibility. A large physician practice may also exist as a medical clinic run by a government agency for health services or a private partnership of physicians.

078 Other rheumatic tricuspid valve diseases
079 Rheumatic tricuspid valve disease, unspecified
080 Rheumatic disorders of both mitral and aortic valves
081 Rheumatic disorders of both mitral and tricuspid valves
082 Rheumatic disorders of both aortic and tricuspid valves
083 Combined rheumatic disorders of mitral, aortic and tricuspid valves



Online ICD-10 Implementation Guide Contents



Online ICD-10 Implementation Guide

Search

WELCOME	ICD-10 OVERVIEW	PAYER	SMALL OR MEDIUM PHYSICIAN PRACTICE	LARGE PHYSICIAN PRACTICE	SMALL HOSPITAL
TABLE OF CONTENTS	IMPLEMENTING ICD-10	NEXT STEPS	TOOLS & TEMPLATES		

Table of Contents

IMPLEMENTATION STEPS & ACTIONS

- ▼ [PLANNING](#)
 - [IMPLEMENTATION TIMELINE](#)
 - [PROJECT MANAGEMENT PROCESS](#)
 - [RISK AND ISSUE MANAGEMENT](#)
- ▶ [COMMUNICATION AND AWARENESS](#)
- ▶ [ASSESSMENT](#)
- ▶ [IMPLEMENTATION PHASE](#)
- ▶ [TESTING](#)
- ▶ [TRANSITION](#)

NEXT STEPS

- [NEXT STEPS](#)

TOOLS & TEMPLATES

- [APPENDIX: RELEVANT TEMPLATES](#)

078 Other rheumatic tricuspid valve diseases
079 Rheumatic tricuspid valve disease, unspecified
080 Rheumatic disorders of both mitral and aortic valves
081 Rheumatic disorders of both mitral and tricuspid valves
082 Rheumatic disorders of both aortic and tricuspid valves
083 Combined rheumatic disorders of mitral, aortic and tricuspid valves



ICD-10 Resources

ICD-10 Website

- <http://www.cms.gov/Medicare/Coding/ICD10/index.html>

Implementation Guides

- <https://implementicd10.noblis.org>

Mapping (GEMs)

- **GEMs Crosswalk documents**
 - <http://www.cms.gov/Medicare/Coding/ICD10/2013-ICD-10-CM-and-GEMs.html>
- **GEMs 2013 General Equivalence Mappings** (Technical Document (zip file))
 - <http://cms.hhs.gov/Medicare/Coding/ICD10/2013-ICD-10-PCS-GEMs.html>

078 Other rheumatic tricuspid valve diseases
079 Rheumatic tricuspid valve disease, unspecified
080 Rheumatic disorders of both mitral and aortic valves
081 Rheumatic disorders of both mitral and tricuspid valves
082 Rheumatic disorders of both aortic and tricuspid valves
083 Combined rheumatic disorders of mitral, aortic and tricuspid valves



ICD-10 Resources (cont'd)

Medicare Learning Network Articles

- <http://www.cms.gov/Outreach-and-Education/Medicare-Learning-Network-MLN/MLNGenInfo/index.html?redirect=/mlngeninfo>

ICD-10 National Provider Calls

- <http://www.cms.gov/Medicare/Coding/ICD10/CMS-Sponsored-ICD-10-Teleconferences.html>

National Coverage Determinations (NCDs)

- <http://www.cms.gov/medicare-coverage-database/overview-and-quick-search.aspx>

Medicare Learning Network

- Materials and associated CRs available free on CMS web site for selected NCDs

078 Other rheumatic tricuspid valve diseases
079 Rheumatic tricuspid valve disease, unspecified
080 Rheumatic disorders of both mitral and aortic valves
081 Rheumatic disorders of both mitral and tricuspid valves
082 Rheumatic disorders of both aortic and tricuspid valves
083 Combined rheumatic disorders of mitral, aortic and tricuspid valves



I068 Other rheumatic aortic valve diseases
I069 Rheumatic aortic valve disease, unspecified
I070 Rheumatic tricuspid stenosis
I071 Rheumatic tricuspid insufficiency
I072 Rheumatic tricuspid stenosis and insufficiency
I078 Other rheumatic tricuspid valve diseases
I079 Rheumatic tricuspid valve disease, unspecified



ICD-10

Official CMS Industry Resources for the ICD-10 Transition
www.cms.gov/ICD10



State Medicaid Agencies ICD-10 Implementation



Working With the State Medicaid Agencies

- **Quarterly Online ICD-10 Self-Assessments**
 - High level reports and graphics to help guide technical assistance
- **ICD-10 Implementation Handbook**
 - Online tool providing SMA specific information to assist in ICD-10 Implementation
- **State ICD-10 Collaboration Site**
 - Online community and repository for State Medicaid Agencies to communicate, collaborate, and innovate in the successful implementation of ICD-10
- **ICD-10 Bi-Weekly State Forum**
 - Conference call that allows CMS and States to discuss current issues related to ICD-10, and provides a vehicle for State-to-State collaboration on best practices and lessons learned in ICD-10 implementation
- **ICD-10 Site Visit Training**
 - General and specific training geared to assist the SMA's ICD-10 implementation efforts
- **ICD-10 Policy Briefs**
 - Demonstrations of how ICD-10 supports the Triple Aim through state programs for 9 different policies
- **Health Condition Categories**
 - A foundation for SMAs to define health conditions in alignment with the needs of their specific agency



078 Other rheumatic tricuspid valve diseases
079 Rheumatic tricuspid valve disease, unspecified
080 Rheumatic disorders of both mitral and aortic valves
081 Rheumatic disorders of both mitral and tricuspid valves
082 Rheumatic disorders of both aortic and tricuspid valves
083 Combined rheumatic disorders of mitral, aortic and tricuspid valves



Health Condition Categories

- Affective Disorders
- Anxiety Disorders
- Attention Deficit Disorders
- Autism Spectrum Disorders
- Schizophrenia
- Substance Abuse
- Coronary Heart Disease
- Heart Failure
- Hypertension
- Myocardial Infection
- Cleft Lip/Palate
- Cerebral Palsy
- Diabetes Mellitus
- Hemophilia
- Leukemia
- AIDS/HIV
- Hepatitis
- Lung Cancer
- Brain Injury
- Chronic Dementia
- CVA
- Epilepsy
- Fetal Maturity/ Development
- High Risk Pregnancy
- Asthma
- COPD
- End-Stage Renal Disease
- Male related Conditions
- Female related Conditions
- Hip Fracture

- Defines 30 health conditions and code sets universally important to State Medicaid Agencies
- Informs ICD-10 transition business and operational requirements
- End users: Medical staff, policy personnel, coding professionals, coding auditors, reporting and business analysts



078 Other rheumatic tricuspid valve diseases
079 Rheumatic tricuspid valve disease, unspecified
080 Rheumatic disorders of both mitral and aortic valves
081 Rheumatic disorders of both mitral and tricuspid valves
082 Rheumatic disorders of both aortic and tricuspid valves
083 Combined rheumatic disorders of mitral, aortic and tricuspid valves



State Medicaid Agencies ICD-10 Collaboration Site

- Provides an online community and repository for State Medicaid Agencies
- Provides SMA related ICD-10 resources from CMCS and SMAs
- Includes calendar of events for Medicaid ICD-10

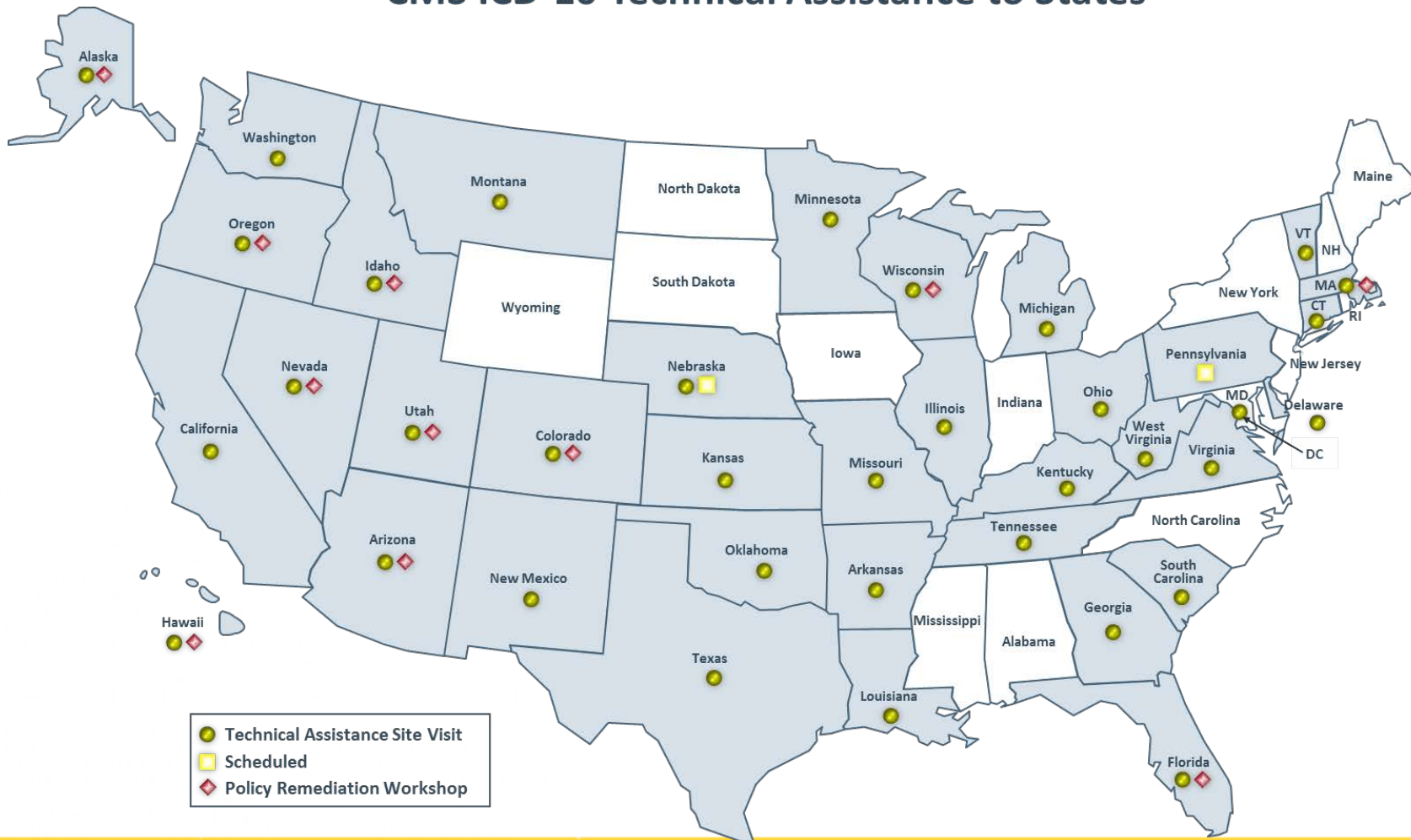
The image displays three overlapping screenshots of the CMS ICD-10 website. The top screenshot shows the 'State Forum' page with a search bar and navigation menu. The middle screenshot shows the 'Communities of Practice' page, listing various topics like Business Processes, Technical, and Testing. The bottom screenshot shows the 'SMA ICD-10 Implementation Timeline' page, featuring a timeline with phases: Awareness (Sep 2010 - Mar 2015), Assessment (Sep 2010 - Jun 2012), Remediation (Jun 2011 - Dec 2013), Testing (Oct 2012 - Sep 2014), and Transition (Mar 2014 - Oct 2014). The Remediation phase is highlighted as the current phase. A sidebar on the left lists months from May to December. The bottom right of the timeline screenshot includes sections for 'STATE FORUM', 'COMMUNITIES OF PRACTICE', and 'NOTICES NEW!'.

078 Other rheumatic tricuspid valve diseases
 079 Rheumatic tricuspid valve disease, unspecified
 080 Rheumatic disorders of both mitral and aortic valves
 081 Rheumatic disorders of both mitral and tricuspid valves
 082 Rheumatic disorders of both aortic and tricuspid valves
 083 Combined rheumatic disorders of mitral, aortic and tricuspid valves



Technical Assistance & Training

CMS ICD-10 Technical Assistance to States



078 Other rheumatic tricuspid valve diseases
 079 Rheumatic tricuspid valve disease, unspecified
 080 Rheumatic disorders of both mitral and aortic valves
 081 Rheumatic disorders of both mitral and tricuspid valves
 082 Rheumatic disorders of both aortic and tricuspid valves
 083 Combined rheumatic disorders of mitral, aortic and tricuspid valves



SMA ICD-10 Technical Assistance & Training



<State> ICD-10 Site Visit

Training segments to assist the <State> with ICD-10 Implementation

ICD-10 Policy Remediation & Best Practices

Date



- Site Visits are customized to each state's needs and progress
 - 8 Training Modules available for the states to choose from
- Conducted Regional Office visits
- Conducted 29 State Site visits (6 additional scheduled)
- Conducted 5 Policy Remediation Site visits (5 additional scheduled)

078 Other rheumatic tricuspid valve diseases
079 Rheumatic tricuspid valve disease, unspecified
080 Rheumatic disorders of both mitral and aortic valves
081 Rheumatic disorders of both mitral and tricuspid valves
082 Rheumatic disorders of both aortic and tricuspid valves
083 Combined rheumatic disorders of mitral, aortic and tricuspid valves



ICD-10 SMA Site Visit Training Content

- Illustrates some of the key business reasons that executives, directors, managers and all aspects of the organization should care about the implementation of ICD-10.
- Identifies the SMA core business functions and the ICD-10 impact.

Why Should I Care?

"Top Ten Reasons"

1. It's the law
2. Budget uncertainty
3. Provider relations
4. Program integrity
5. Analytic uncertainty
6. Major policy and rule re-write
7. Unpredictable DRG Assignment
8. Changes to quality measures
9. Potential mandate changes
10. Unpredictable contract changes

Some of the reasons are:

- No payment for claims with ICD-9 codes with dates of service or discharge dates after Oct 1 2014
- Lack of historical experience in projecting trends
- Provider education
- Categories of services and conditions will be completely redefined.
- Redefinition of quality measure numerator and denominator criteria

Impact to SMA

- Claims Processing
- Product Development
- Enrollment Management
- Reimbursement / Network Management
- Customer Service
- Care Management
- Quality Management
- Vendor Management
- Impact to Production

Some impacts are:

- Accuracy of payments (i.e. DRG, provider contracts, policy remediation)
- Significant modification to SMA MMIS systems, infrastructure and IVR equipment.
- Impact to HEDIS measures
- Tools/criteria used to determine Vendor and business partner readiness
- Defining vendor/business readiness



ICD-10 State Medicaid Agency Implementation Handbook

5.3 Remediation Phase Overview

5. Medicaid ICD-10 Implementation Steps and Actions

5.1 Awareness Phase

5.2 Assessment Phase Overview

5.3 Remediation Phase Overview

5.4 Testing Phase Overview

5.5 Transition Phase Overview

5.6 All Phases: Coordinate with Other State-Based Healthcare Information Technology Efforts

ICD-10 Tools

Clinical Documentation Requirements

Developing Scenario Based ICD-10 Test Data

Health Condition Categories

Industry ICD-10 Implementation Handbooks

Policy Briefs

Policy Remediation Best Practices

State Medicaid Agency ICD-10 Implementation Assistance Handbook

SEARCH Type a Keyword, then press enter

LOGIN

ICD-10 OVERVIEW ICD-10 IMPLEMENTATION ASSISTANCE HANDBOOK

ICD-10 OVERVIEW ICD-10 IMPLEMENTATION ASSISTANCE HANDBOOK

State Medicaid Agency ICD-10 Implementation Assistance Handbook

Title	State Medicaid ICD-10 Implementation Assistance Handbook (v4.0, May 8, 2013)
Intended Use	Assist SMAs through the actions required to implement ICD-10 in alignment with the ICD-10 compliance date. <i>Medicaid ICD-10 Implementation Assistance Handbook (All Sections)</i>
Accompanying Documents	<ol style="list-style-type: none"> Executive Summary Introduction The ICD-9-CM Environment The Future ICD-10 Environment Medicaid ICD-10 Implementation Steps and Actions Next Steps <p>Appendix A - Glossary of Terms</p> <p>Appendix B - Templates and Artifacts</p>
Target Audience	The State Medicaid Agency (SMA) ICD-10 Project Manager will benefit from the Handbook in its entirety; specific chapters will be relevant to other ICD-10 project team leads/members by area of responsibility including MMIS, coding, operations, member management, provider management, contractor management, business relations management, Program Integrity, and medical/care management.
Author / Publication Date	CMCS/Noblis - May 8, 2013
Disclaimer	The Handbook does not provide assistance on processes or tasks outside of the direct responsibility or control of the SMAs, nor is it an SMA-specific implementation plan.
Comments	SMAs should consider the <i>State Medicaid ICD-10 Implementation Assistance Handbook</i> Version 4.0 as the most current as it reflects the revised ICD-10 compliance date of October 2014.

Contact the CMS/Noblis ICD-10 Team @ MedicaidICD10@noblis.org

Support provided by noblis

- Contains information on the following core topics:
 - Limitations of the current ICD-9-CM code set
 - Benefits of implementing ICD-10
 - ICD-10 milestones
 - Key activities
 - Strategies and activities required to implement ICD-10 during the five implementation phases.

078 Other rheumatic tricuspid valve diseases
 079 Rheumatic tricuspid valve disease, unspecified
 080 Rheumatic disorders of both mitral and aortic valves
 081 Rheumatic disorders of both mitral and tricuspid valves
 082 Rheumatic disorders of both aortic and tricuspid valves
 083 Combined rheumatic disorders of mitral, aortic and tricuspid valves



Nine Policy Briefs Show How ICD-10 Supports Healthcare Transformation for:

- CHIP
- Pregnancy
- Breast & Cervical Cancer Prevention
- HIV/AIDS
- Alzheimer's Disease
- Traumatic Brain and Spinal Cord Injuries
- Intellectual Disability
- Coordination of Care

...in State Medicaid Programs

POLICY BRIEF: ICD-10 Supports CMS' National Quality Strategy through State Programs for Spinal Cord and Traumatic Brain Injuries

Summary: Healthcare in the United States is in the midst of a significant transformation characterized by increased transparency, accountability, and coordination in order to

Policy and Programs

Congress has passed laws that attempt to address and prevent injuries that may result in TBI and SCI. Some of these programs also support injury treatment, rehabilitation, and long-term care. Relevant legislation and federal programs are listed in the chart below.

Legislation/Program	Sponsor	Intent/Benefit
---------------------	---------	----------------

Table of Contents	
Background	1
Impact	1
Clinical and Treatment Information about	1
Policy and Programs	1
Coding	1
Relationships	1
Program Operations and ICD-10	1
Eligibility and Enrollment	1
Benefits & Coverage	1
Costs and Payment	1
Program Relationship with ICD-10 through Other Initiatives	14
The Transformation of Health Information Technology (HIT)	14
Program Integrity	17
Person-Centered Benefits	18
Care Management and Prevention	18
Value-Based Purchasing	20
Conclusion	21
Appendix A: ICD-10-CM Traumatic Brain Injury Codes	22
Appendix B: ICD-9-CM Traumatic Brain Injury Codes	45



078 Other rheumatic tricuspid valve diseases
 079 Rheumatic tricuspid valve disease, unspecified
 080 Rheumatic disorders of both mitral and aortic valves
 081 Rheumatic disorders of both mitral and tricuspid valves
 082 Rheumatic disorders of both aortic and tricuspid valves
 083 Combined rheumatic disorders of mitral, aortic and tricuspid valves



For More Information

CMS Point of Contact



Renee Richard

CMS Boston Regional Office

Renee.Richard@cms.hhs.gov

078 Other rheumatic tricuspid valve diseases
079 Rheumatic tricuspid valve disease, unspecified
080 Rheumatic disorders of both mitral and aortic valves
081 Rheumatic disorders of both mitral and tricuspid valves
082 Rheumatic disorders of both aortic and tricuspid valves
083 Combined rheumatic disorders of mitral, aortic and tricuspid valves



Questions?

ICD-10 Questions Mailbox:
icd10questions@noblis.org

078 Other rheumatic tricuspid valve diseases
079 Rheumatic tricuspid valve disease, unspecified
080 Rheumatic disorders of both mitral and aortic valves
081 Rheumatic disorders of both mitral and tricuspid valves
082 Rheumatic disorders of both aortic and tricuspid valves
083 Combined rheumatic disorders of mitral, aortic and tricuspid valves



ICD-10

Official CMS Industry Resources for the ICD-10 Transition
www.cms.gov/ICD10